

### Reinforcing Bar Supports

#### Minimum Wire Sizes & Geometry for Classes 1, 2, & 3

Note<sup>1</sup>: Top wire on continuous supports, not otherwise designed as corrugated, may be straight or corrugated.

Note<sup>2</sup>: Wire sizes are American Steel and Wire gauges.

Note<sup>3</sup>: The nominal height of the bar support is taken as the distance from the bottom of the leg, sandplate or runner wire to the bottom of the reinforcement. Variations of plus or minus 1/8" from the stated nominal height are generally permitted.

Note<sup>4</sup>: In order to provide adequate stability against overturning, the leg spread measured between points of support on the minor axis of the support is recommended to be not less than 70% of the nominal height.

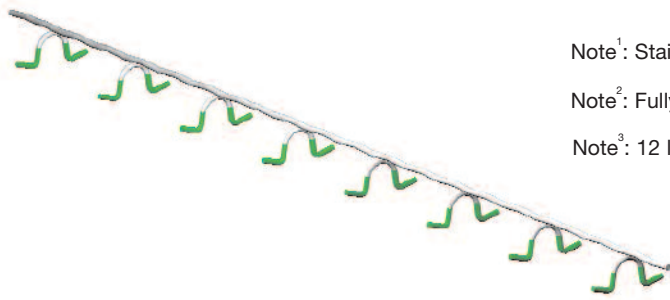
Note<sup>5</sup>: In order to provide adequate stability against overturning, the leg spread measured between points of support on the minor axis of the support is recommended to be not less than 55% of the nominal height.

Note<sup>6</sup>: In order to provide adequate stability against overturning and to provide adequate load capacity, the leg spread measured between points of support on the minor axis of the support is recommended to be not to exceed the minimum percentages of the nominal height, as shown.

# General Line Products

## Reinforcing Bar Supports

### (5001) SLAB BOLSTER (SB)



Note<sup>1</sup>: Stainless Steel Class 2A priced upon availability (POA).

Note<sup>2</sup>: Fully encapsulated (plastic) priced upon availability (POA).

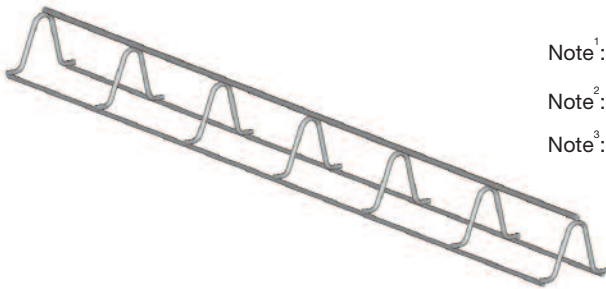
Note<sup>3</sup>: 12 legs p/5' pc.

72

Description	MB Product #				Size	Approx. Weight
	Plastic Protected		Bright or Plain	Epoxy		
	Dipped	Tipped				
For heights up to and including 3/4"	719045	719046	719016	719090	3/4"	19
For heights over 3/4" and including 1"	719142	719146	719113	719197	1"	20
For heights over 1" and including 2"	719249	719250	719210	719294	1-1/4"	25
	719346	719347	719317	719391	1-1/2"	25
	719443	719444	719414	719498	1-3/4"	25
	719540	719541	719511	719595	2"	25
For heights over 2" and including 2-1/2"	719647	719648	719618	719692	2-1/4"	28
	719744	719745	719715	719799	2-1/2"	28
For heights over 2-1/2" and including 3"	719841	719842	719812	719896	2-3/4"	31
	719948	719949	719919	719993	3"	31

### Reinforcing Bar Supports

**(5005) SLAB BOLSTER W/RUNNER (SBR)**



Note<sup>1</sup>: Stainless Steel Class 2A priced upon availability (POA).

Note<sup>2</sup>: Fully encapsulated (plastic) priced upon availability (POA).

Note<sup>3</sup>: 12 legs p/5' pc.

Description	MB Product #			Size	Approx. Weight
	Plastic Dipped	Bright or Plain	Epoxy		
For heights up to and including 3/4"	719085	719061	719092	3/4"	36
For heights over 3/4" and including 1"	719198	719168	719199	1"	38
For heights over 1" and including 2"	719281	719265	719296	1-1/4"	42
	719378	719362	719393	1-1/2"	42
	719499	719469	719500	1-3/4"	42
	719581	719566	719597	2"	45
For heights over 2" and including 2-1/2"	719693	719663	719694	2-1/4"	45
	719800	719760	719801	2-1/2"	48
For heights over 2-1/2" and including 3"	719897	719867	719898	2-3/4"	48
	719994	719964	719995	3"	48

Note<sup>2</sup>: Fully encapsulated (plastic) priced upon availability (POA).

# General Line Products

## Reinforcing Bar Supports

### (5010) SLAB BOLSTER W/PLATE (SBP)



Note<sup>1</sup>: Plate available for Plain material only. Contact your customer service representative for special pricing other than Plain Material.

Note<sup>2</sup>: Specify Strip or Solid Plate.

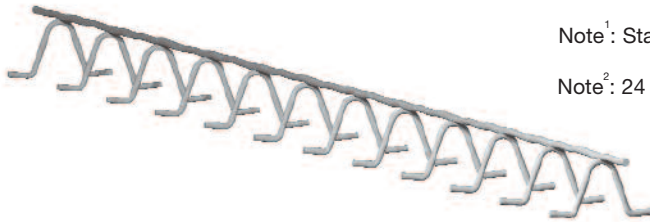
Note<sup>3</sup>: 12 legs p/5' pc.

74

Description	MB Product #		Size	Epoxy	Approx. Weight
	Plain	Epoxy			
For heights up to and including 3/4"	719074	Note <sup>1</sup>	3/4"	Note <sup>1</sup>	58
For heights over 3/4" and including 1"	719171	Note <sup>1</sup>	1"	Note <sup>1</sup>	60
For heights over 1" and including 2"	719278	Note <sup>1</sup>	1-1/4"	Note <sup>1</sup>	65
	719375	Note <sup>1</sup>	1-1/2"	Note <sup>1</sup>	65
	719472	Note <sup>1</sup>	1-3/4"	Note <sup>1</sup>	65
	719579	Note <sup>1</sup>	2"	Note <sup>1</sup>	65
For heights over 2" and including 2-1/2"	719676	Note <sup>1</sup>	2-1/4"	Note <sup>1</sup>	67
	719773	Note <sup>1</sup>	2-1/2"	Note <sup>1</sup>	67
For heights over 2-1/2" and including 3"	719870	Note <sup>1</sup>	2-3/4"	Note <sup>1</sup>	70
	719977	Note <sup>1</sup>	3"	Note <sup>1</sup>	70

### Reinforcing Bar Supports

**(5015) BEAM BOLSTER - STANDARD (BB)**



Note<sup>1</sup>: Stainless Steel Class 2A priced upon availability (POA).

Note<sup>2</sup>: 24 legs p/5' pc.

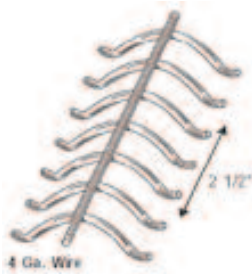
Description	MB Product #				Size	Approx. Weight
	Plastic Protected		Plain	Epoxy		
	Dipped	Tipped				
For heights over 3/4" and including 1"	721046	721047	721017	721169	1"	25
For heights over 1" and including 2"	721237	721238	721208	721363	1-1/4"	25
	721431	721432	721402	721567	1-1/2"	25
	721635		721606	721761	1-3/4"	28
	721839	721840	721800	721965	2"	28

75

# General Line Products

## Reinforcing Bar Supports

(5020) BEAM BOLSTER - HEAVY (HBB)



Note<sup>1</sup>: Stainless Steel Class 2A priced upon availability (POA).

Note<sup>2</sup>: Adding a plate to Plain product.

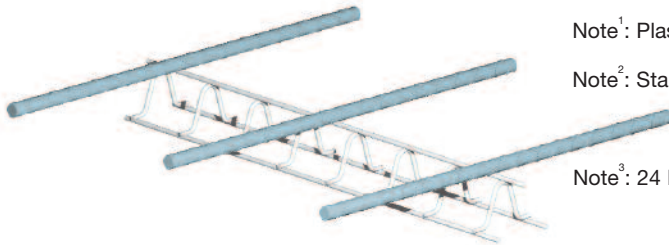
Note<sup>3</sup>: 24 legs p/5' pc.

76

Description	MB Product #				Size	Approx. Weight
	Plastic Protected		Plain	Epoxy		
	Dipped	Tipped				
For heights up to and including 1-1/2"	721101		721075	721171	1"	39
	721282		721266	721365	1-1/4"	39
	721499		721460	721572	1-1/2"	39
For heights over 1-1/2" and including 2"	721693		721664	721764	1-3/4"	44
	721897		721868	721936	2"	44
For heights over 2" and including 2-1/2"	722032		722003	722061	2-1/4"	47
	722100		722074	722139	2-1/2"	47
For heights over 2-1/2" and including 3"	722171		722142	722207	2-3/4"	53
	722252		722223	722281	3"	53
For heights over 3" and including 4"	722333		722304	722362	3-1/4"	58
	722414		722388	722443	3-1/2"	58
	722498		722469	722511	3-3/4"	58
	722579		722540	722605	4"	58
For heights over 4" and including 5"	722650		722621	722676	4-1/4"	63
	722731		722702	722773	4-1/2"	63
	722812		722786	722838	4-3/4"	63
	722896		722867	722919	5"	63

### Reinforcing Bar Supports

**(5025) BEAM BOLSTER - UPPER (BBU)**



Note<sup>1</sup>: Plastic Dipped (ONLY) priced upon availability (POA).

Note<sup>2</sup>: Stainless Steel Class 2A priced upon availability (POA).

Note<sup>3</sup>: 24 legs p/5' pc.

Description	MB Product #			Size	Plastic Dipped	Approx. Weight
	Plastic Dipped	Plain	Epoxy			
For heights up to and including 1-1/2"	Note <sup>1</sup>	721062	721172	1"	Note <sup>1</sup>	42
	Note <sup>1</sup>	721253	721366	1-1/4"	Note <sup>1</sup>	42
	Note <sup>1</sup>	721457	721570	1-1/2"	Note <sup>1</sup>	42
For heights over 1" and including 2"	Note <sup>1</sup>	721651	721763	1-3/4"	Note <sup>1</sup>	45
	Note <sup>1</sup>	721855	721967	2"	Note <sup>1</sup>	45

77

# General Line Products

## Reinforcing Bar Supports

(5030) BEAM BOLSTER - UPPER HEAVY (HBBU)



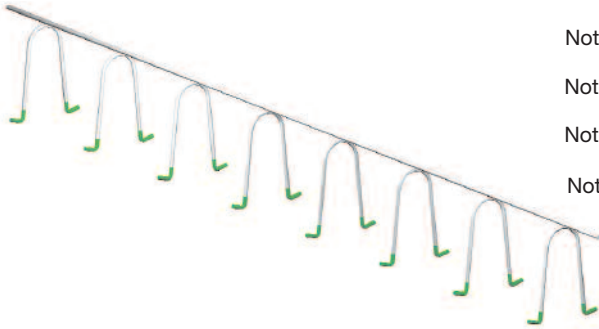
Note<sup>1</sup>: 24 legs p/5' pc.

78

Description	MB Product #			Size	Plastic Dipped	Approx. Weight
	Plastic Dipped	Plain	Epoxy			
For heights up to and including 1-1/2"	Note <sup>1</sup>	721114	721173	1"	Note <sup>1</sup>	66
	Note <sup>1</sup>	721305	721367	1-1/4"	Note <sup>1</sup>	66
	Note <sup>1</sup>	721509	721573	1-1/2"	Note <sup>1</sup>	66
For heights over 1-1/2" and including 2"	Note <sup>1</sup>	721703	721765	1-3/4"	Note <sup>1</sup>	71
	Note <sup>1</sup>	721907	721969	2"	Note <sup>1</sup>	71
For heights over 2" and including 2-1/2"	Note <sup>1</sup>	722045	722063	2-1/4"	Note <sup>1</sup>	75
	Note <sup>1</sup>	722113	722141	2-1/2"	Note <sup>1</sup>	75
For heights over 2-1/2" and including 3"	Note <sup>1</sup>	722184	722209	2-3/4"	Note <sup>1</sup>	80
	Note <sup>1</sup>	722265	722283	3"	Note <sup>1</sup>	80
For heights over 3" and including 4"	Note <sup>1</sup>	722346	722365	3-1/4"	Note <sup>1</sup>	85
	Note <sup>1</sup>	722427	722445	3-1/2"	Note <sup>1</sup>	85
	Note <sup>1</sup>	722508	722513	3-3/4"	Note <sup>1</sup>	85
	Note <sup>1</sup>	722582	722607	4"	Note <sup>1</sup>	85
For heights over 4" and including 5"	Note <sup>1</sup>	722663	722678	4-1/4"	Note <sup>1</sup>	90
	Note <sup>1</sup>	722744	722775	4-1/2"	Note <sup>1</sup>	90
	Note <sup>1</sup>	722825	722840	4-3/4"	Note <sup>1</sup>	90
	Note <sup>1</sup>	722906	722921	5"	Note <sup>1</sup>	90

### Reinforcing Bar Supports

#### (5035) CONTINUOUS HIGH CHAIR (CHC)



Note<sup>1</sup>: Stainless Steel Class 2A priced upon availability (POA).

Note<sup>2</sup>: Add from page 79.

Note<sup>3</sup>: Add from page 79.

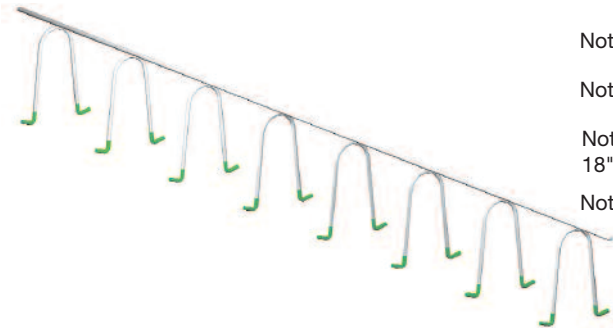
Note<sup>4</sup>: 8 legs p/5' pc.

Description	MB Product #				Size	Approx. Weight p/100 Lft.
	Plastic Protected		Plain	Epoxy		
	Dipped	Tipped				
For heights up to 3"	725042	*	725013	725097	2"	33
	725149	*	725110	725194	2-1/4"	33
	725246	*	725217	725291	2-1/2"	33
	725343	*	725314	725398	2-3/4"	33
	725440	725441	725411	725495	3"	33
For heights over 3" and including 4"	725547	725548	725518	725592	3-1/4"	36
	725644	725646	725615	725699	3-1/2"	36
	725741	725742	725712	725796	3-3/4"	36
	725848	725849	725819	725893	4"	36
For heights over 4" and including 5"	725945	*	725916	725990	4-1/4"	39
	726041	726045	726012	726106	4-1/2"	39
	726148	*	726119	726193	4-3/4"	39
	726245	726247	726216	726290	5"	39
For heights over 5" and including 6"	726342	726345	726313	726397	5-1/4"	53
	726449	726451	726410	726494	5-1/2"	53
	726546	726518	726517	726591	5-3/4"	53
	726643	726645	726614	726698	6"	53
For heights over 6" and including 7"	726740	726741	726711	726795	6-1/4"	58
	726847	726848	726818	726892	6-1/2"	58
	727943	727915	727914	727998	6-3/4"	58
	728049	728050	728010	728094	7"	58
For heights over 7" and including 8"	728146	728150	728117	728191	7-1/4"	63
	728243	728244	728214	728298	7-1/2"	63
	728340	728339	728311	728395	7-3/4"	63
	728447	728449	728418	728492	8"	63

# General Line Products

## Reinforcing Bar Supports

### (5035) CONTINUOUS HIGH CHAIR (CHC) - Continued



Note<sup>1</sup>: Stainless Steel Class 2A priced upon availability (POA).

Note<sup>2</sup>: Epoxy over 15" priced upon availability (POA).

Note<sup>3</sup>: Contact your Customer Service Representative for sizes exceeding 18" tall.

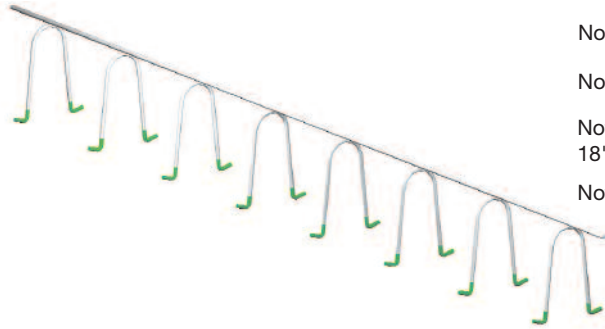
Note<sup>4</sup>: 8 legs p/5' pc.

80

Description	MB Product #			Size	Approx. Weight p/100 Lft.	
	Plastic Protected		Plain			Epoxy
	Dipped	Tipped				
For heights over 8" and including 9"	728544	*	728515	728561	8-1/4"	68
	728641	728640	728612	728642	8-1/2"	68
	728748	728730	728719	728749	8-3/4"	68
	728845	728844	728816	728846	9"	68
For heights over 9" and including 10"	*	728955	728913	728956	9-1/4"	93
	*	729048	729019	729049	9-1/2"	93
	*	729145	729116	729146	9-3/4"	93
	*	729446	729213	729259	10"	93
For heights over 10" and including 11"	*	729640	729635	729641	10-1/4"	100
	*	729747	729718	729748	10-1/2"	100
	*	729844	729830	729845	10-3/4"	100
	*	729941	729912	729968	11"	100
For heights over 11" and including 12"	*	730040	730011	730007	11-1/4"	107
	*	730147	730118	730041	11-1/2"	107
	*	730244	730200	730148	11-3/4"	107
	*	730406	730312	730261	12"	107
For heights over 12" and including 13"	*	730448	730440	730353	12-1/4"	114
	*	730642	730516	730449	12-1/2"	114
	*	730690	730740	730650	12-3/4"	114
	*	730846	730710	730715	13"	114
For heights over 13" and including 14"	730847	*	730844	730845	13-1/4"	121
	*	730943	730914	730851	13-1/2"	121
	730848	*	731010	731027	13-3/4"	121
	*	731146	731117	731159	14"	121

### Reinforcing Bar Supports

**(5035) CONTINUOUS HIGH CHAIR (CHC) - Continued**



Note<sup>1</sup>: Stainless Steel Class 2A priced upon availability (POA).

Note<sup>2</sup>: Epoxy over 15" priced upon availability (POA).

Note<sup>3</sup>: Contact your Customer Service Representative for sizes exceeding 18" tall.

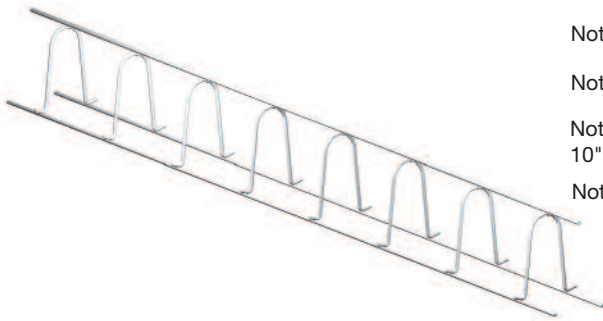
Note<sup>4</sup>: 8 legs p/5' pc.

Description	MB Product #				Size	Approx. Weight p/100 Lft.
	Plastic Protected		Plain	Epoxy		
	Dipped	Tipped				
For heights over 14" and including 15"	731339	*	731338	731337	14-1/4"	128
	*	731340	731311	731367	14-1/2"	128
	731370	*	731371	731377	14-3/4"	128
	*	731544	731515	731561	15"	128
For heights over 15" and including 16"	*	731600	731601	Note <sup>2</sup>	15-1/4"	135
	*	731700	731701	Note <sup>2</sup>	15-1/2"	135
	731810	*	731816	Note <sup>2</sup>	15-3/4"	135
	731900	*	731901	Note <sup>2</sup>	16"	135
For heights over 16" and including 17"	731960	*	731961	Note <sup>2</sup>	16-1/4"	142
	*	731970	731971	Note <sup>2</sup>	16-1/2"	142
	731980	*	731981	Note <sup>2</sup>	16-3/4"	142
	732400	*	732401	Note <sup>2</sup>	17"	142
For heights over 17" and including 18"	732500	*	732501	Note <sup>2</sup>	17-1/4"	149
	732600	*	732601	Note <sup>2</sup>	17-1/2"	149
	732700	*	732701	Note <sup>2</sup>	17-3/4"	149
	733003	*	733004	Note <sup>2</sup>	18"	149

# General Line Products

## Reinforcing Bar Supports

### (5040) CONTINUOUS HIGH CHAIR - UPPER (UHC)



Note<sup>1</sup>: Stainless Steel Class 2A priced upon availability (POA).

Note<sup>2</sup>: Plastic Dipped material priced upon availability (POA).

Note<sup>3</sup>: Contact your Customer Service Representative for sizes exceeding 10" tall.

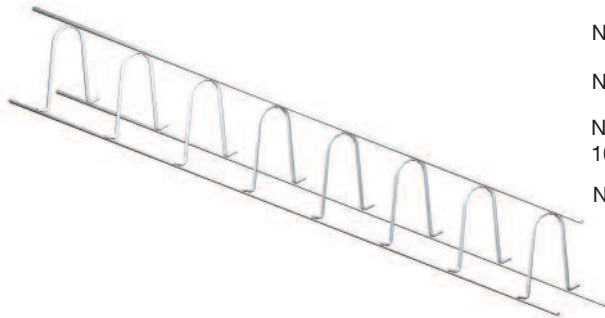
Note<sup>4</sup>: 8 legs p/5' pc.

82

Description	MB Product #			Size	Plastic Dipped	Approx. Weight
	Plastic Dipped	Plain	Epoxy			
For heights up to 3"	Note <sup>2</sup>	725055	725099	2"	Note <sup>2</sup>	63
	Note <sup>2</sup>	725152	725196	2-1/4"	Note <sup>2</sup>	63
	Note <sup>2</sup>	725259	725293	2-1/2"	Note <sup>2</sup>	63
	Note <sup>2</sup>	725356	725400	2-3/4"	Note <sup>2</sup>	63
	Note <sup>2</sup>	725453	725497	3"	Note <sup>2</sup>	63
For heights over 3" and including 4"	Note <sup>2</sup>	725550	725594	3-1/4"	Note <sup>2</sup>	66
	Note <sup>2</sup>	725657	725701	3-1/2"	Note <sup>2</sup>	66
	Note <sup>2</sup>	725754	725806	3-3/4"	Note <sup>2</sup>	66
	Note <sup>2</sup>	725851	725895	4"	Note <sup>2</sup>	66
For heights over 4" and including 5"	Note <sup>2</sup>	725958	725992	4-1/4"	Note <sup>2</sup>	69
	Note <sup>2</sup>	726054	726108	4-1/2"	Note <sup>2</sup>	69
	Note <sup>2</sup>	726151	726195	4-3/4"	Note <sup>2</sup>	69
	Note <sup>2</sup>	726258	726292	5"	Note <sup>2</sup>	69
For heights over 5" and including 6"	Note <sup>2</sup>	726355	726399	5-1/4"	Note <sup>2</sup>	83
	Note <sup>2</sup>	726452	726496	5-1/2"	Note <sup>2</sup>	83
	Note <sup>2</sup>	726559	726593	5-3/4"	Note <sup>2</sup>	83
	Note <sup>2</sup>	726656	726700	6"	Note <sup>2</sup>	83
For heights over 6" and including 7"	Note <sup>2</sup>	726753	726797	6-1/4"	Note <sup>2</sup>	88
	Note <sup>2</sup>	726850	726894	6-1/2"	Note <sup>2</sup>	88
	Note <sup>2</sup>	727956	728000	6-3/4"	Note <sup>2</sup>	88
	Note <sup>2</sup>	728052	728096	7"	Note <sup>2</sup>	88
For heights over 7" and including 8"	Note <sup>2</sup>	728159	728192	7-1/4"	Note <sup>2</sup>	93
	Note <sup>2</sup>	728256	728299	7-1/2"	Note <sup>2</sup>	93
	Note <sup>2</sup>	728353	728396	7-3/4"	Note <sup>2</sup>	93
	Note <sup>2</sup>	728450	728493	8"	Note <sup>2</sup>	93

### Reinforcing Bar Supports

**(5040) CONTINUOUS HIGH CHAIR - UPPER (UCHC) - Continued**



Note<sup>1</sup>: Stainless Steel Class 2A priced upon availability (POA).

Note<sup>2</sup>: Plastic Dipped material priced upon availability (POA).

Note<sup>3</sup>: Contact your Customer Service Representative for sizes exceeding 10" tall.

Note<sup>4</sup>: 8 legs p/5' pc.

Description	MB Product #			Size	Plastic Dipped	Approx. Weight
	Plastic Dipped	Plain	Epoxy			
For heights over 8" and including 9"	Note <sup>2</sup>	728557	728562	8-1/4"	Note <sup>2</sup>	98
	Note <sup>2</sup>	728654	728643	8-1/2"	Note <sup>2</sup>	98
	Note <sup>2</sup>	728751	728750	8-3/4"	Note <sup>2</sup>	98
	Note <sup>2</sup>	728858	728847	9"	Note <sup>2</sup>	98
For heights over 9" and including 10"	Note <sup>2</sup>	728968	728957	9-1/4"	Note <sup>2</sup>	123
	Note <sup>2</sup>	729051	729050	9-1/2"	Note <sup>2</sup>	123
	Note <sup>2</sup>	729158	729159	9-3/4"	Note <sup>2</sup>	123
	Note <sup>2</sup>	729255	729260	10"	Note <sup>2</sup>	123

83

# General Line Products

## Reinforcing Bar Supports

### (5045) CONTINUOUS HIGH CHAIR - W/PLATE (CHCP)



Note<sup>1</sup>: Plate available for Bright/Plain material only.

Note<sup>4</sup>: Missing - See page 84.

Note<sup>3</sup>: Contact your Customer Service Representative for pricing other than Bright/Plain material.

Note<sup>4</sup>: 8 legs p/5' pc.

Please Specify Strip or Full Plate when ordering.

84

Description	MB Product #		Size	Approx. Weight
	Plain	Epoxy		
For heights up to 3"	725068	Note <sup>1</sup>	2"	83
	725165	Note <sup>1</sup>	2-1/4"	83
	725262	Note <sup>1</sup>	2-1/2"	83
	725369	Note <sup>1</sup>	2-3/4"	83
	725466	Note <sup>1</sup>	3"	83
For heights over 3" and including 4"	725563	Note <sup>1</sup>	3-1/4"	86
	725660	Note <sup>1</sup>	3-1/2"	86
	725767	Note <sup>1</sup>	3-3/4"	86
	725864	Note <sup>1</sup>	4"	86
For heights over 4" and including 5"	725961	Note <sup>1</sup>	4-1/4"	89
	726067	Note <sup>1</sup>	4-1/2"	89
	726164	Note <sup>1</sup>	4-3/4"	89
	726261	Note <sup>1</sup>	5"	89
For heights over 5" and including 6"	726368	Note <sup>1</sup>	5-1/4"	103
	726465	Note <sup>1</sup>	5-1/2"	103
	726562	Note <sup>1</sup>	5-3/4"	103
	726669	Note <sup>1</sup>	6"	103
For heights over 6" and including 7"	726766	Note <sup>1</sup>	6-1/4"	108
	726863	Note <sup>1</sup>	6-1/2"	108
	727969	Note <sup>1</sup>	6-3/4"	108
	728065	Note <sup>1</sup>	7"	108
For heights over 7" and including 8"	728162	Note <sup>1</sup>	7-1/4"	113
	728269	Note <sup>1</sup>	7-1/2"	113
	728366	Note <sup>1</sup>	7-3/4"	113
	728463	Note <sup>1</sup>	8"	113

### Reinforcing Bar Supports

**(5045) CONTINUOUS HIGH CHAIR - W/PLATE (CHCP) - Continued**



Note<sup>1</sup>: Plate available for Bright/Plain material only.

Note<sup>2</sup>: Contact your Customer Service Representative for sizes exceeding 18" tall.

Note<sup>3</sup>: Contact your Customer Service Representative for pricing other than Bright/Plain material.

Note<sup>4</sup>: 8 legs p/5' pc.

Please Specify Strip or Full Plate when ordering.

Description	MB Product #		Size	Approx. Weight
	Plain	Epoxy		
For heights over 8" and including 9"	728560	Note <sup>1</sup>	8-1/4"	118
	728667	Note <sup>1</sup>	8-1/2"	118
	728764	Note <sup>1</sup>	8-3/4"	118
	728861	Note <sup>1</sup>	9"	118
For heights over 9" and including 10"	728958	Note <sup>1</sup>	9-1/4"	143
	729064	Note <sup>1</sup>	9-1/2"	143
	729161	Note <sup>1</sup>	9-3/4"	143
	729268	Note <sup>1</sup>	10"	143
For heights over 10" and including 11"	729642	Note <sup>1</sup>	10-1/4"	150
	729763	Note <sup>1</sup>	10-1/2"	150
	729846	Note <sup>1</sup>	10-3/4"	150
	729967	Note <sup>1</sup>	11"	150
For heights over 11" and including 12"	730042	Note <sup>1</sup>	11-1/4"	157
	730163	Note <sup>1</sup>	11-1/2"	157
	730260	Note <sup>1</sup>	11-3/4"	157
	730356	Note <sup>1</sup>	12"	157
For heights over 12" and including 13"	730451	Note <sup>1</sup>	12-1/4"	164
	730464	Note <sup>1</sup>	12-1/2"	164
	730751	Note <sup>1</sup>	12-3/4"	164
	730765	Note <sup>1</sup>	13"	164
For heights over 13" and including 14"	730849	Note <sup>1</sup>	13-1/4"	171
	731007	Note <sup>1</sup>	13-1/2"	171
	731026	Note <sup>1</sup>	13-3/4"	171
	731162	Note <sup>1</sup>	14"	171

# General Line Products

## Reinforcing Bar Supports

### (5045) CONTINUOUS HIGH CHAIR - W/PLATE (CHCP) - Continued



Note<sup>1</sup>: Plate available for Bright/Plain material only.

Note<sup>2</sup>: Contact your Customer Service Representative for sizes exceeding 18" tall.

Note<sup>3</sup>: Contact your Customer Service Representative for pricing other than Bright/Plain material.

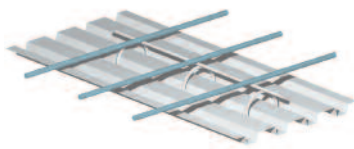
86

Description	MB Product #		Size	Approx. Weight
	Plain	Epoxy		
For heights over 14" and including 15"	731257	Note <sup>1</sup>	14-1/4"	178
	731366	Note <sup>1</sup>	14-1/2"	178
	731376	Note <sup>1</sup>	14-3/4"	178
	731560	Note <sup>1</sup>	15"	178
For heights over 15" and including 16"	731605	Note <sup>1</sup>	15-1/4"	185
	731705	Note <sup>1</sup>	15-1/2"	185
	731818	Note <sup>1</sup>	15-3/4"	185
	731959	Note <sup>1</sup>	16"	185
For heights over 16" and including 17"	731963	Note <sup>1</sup>	16-1/4"	192
	731972	Note <sup>1</sup>	16-1/2"	192
	731985	Note <sup>1</sup>	16-3/4"	192
	732408	Note <sup>1</sup>	17"	192
For heights over 17" and including 18"	732507	Note <sup>1</sup>	17-1/4"	199
	732607	Note <sup>1</sup>	17-1/2"	199
	732707	Note <sup>1</sup>	17-3/4"	199
	732957	Note <sup>1</sup>	18"	199

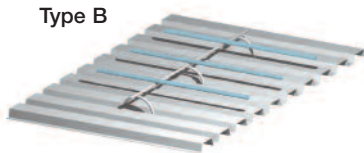
### Reinforcing Bar Supports

#### (5050) CONTINUOUS HIGH CHAIR - METAL DECK (CHCM)

Used to support reinforcing bars on metal deck. Standard leg is spread 3-1/2". Others available.  
 Ends of legs are straight to prevent spreading on metal deck. Bright Basic and Plastic Dip only.  
 Set-up charge per order, regardless of order size or number of items per order.



Type A



Type B

4-1/2" to 6" Leg Spacing				
Height	Plain	Dipped	Spread	Leg Spacing
2"	740001	*	4-1/2"	6"
2-1/4"	740056	738100	3-1/2"	6"
2-3/4"	740153	*	4-1/2"	6"
3"	740205	*	4-1/2"	6"
3-1/2"	*	740315	4-1/2"	6"
3-1/4"	740250	740263	4-1/2"	6"
3-3/4"	740357	*	4-1/2"	6"
4"	740409	*	4-1/2"	6"
5"	740603	*	4-1/2"	6"
6"	740807	*	4-1/2"	6"
6-3/4"	740959	*	4-1/2"	6"

87

6-1/4" to 8" Leg Spacing				
Height	Plain	Dipped	Spread	Leg Spacing
2"	750027	*	6-1/4"	8"
3"	740221	*	6-1/4"	8"
3-1/2"	738225	738250	3-1/2"	8"
3-3/4"	*	740386	6-1/4"	8"
3-3/4"	738265	738280	3-1/2"	7-1/2"
4"	738295	738310	3-1/2"	8"
4-1/2"	738355	738370	3-1/2"	8"
4-1/4"	738325	738340	3-1/2"	8"

8-1/4" to 10" Leg Spacing				
Height	Plain	Dipped	Spread	Leg Spacing
3"	738124	738149	3-1/2"	8-1/4"
3"	738125	738150	3-1/2"	8-1/2"
3"	738254	*	3-1/2"	12"
3-1/2"	740344	*	8-1/4"	10"
3-1/4"	738175	738200	3-1/2"	8-1/2"
3-3/4"	740399	*	8-1/4"	10"
4"	740441	*	8-1/4"	10"
4-1/2"	740548	*	8-1/4"	10"
4-1/2"	738357	*	3-1/2"	12"
5-1/2"	740742	*	8-1/4"	10"
5-1/2"	738419	*	3-1/2"	12"
5-1/4"	740690	*	8-1/4"	10"

\*Other sizes available upon request.

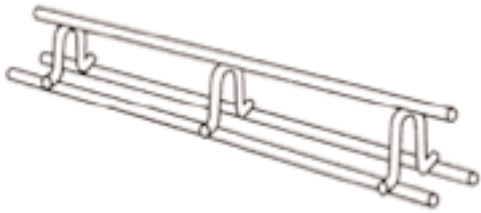
To Order, Specify: Leg spacing, leg spread and height.

Contact your nearest Service Center for order placement.

# General Line Products

## Reinforcing Bar Supports

### (5055) CONTINUOUS MESH CHAIR

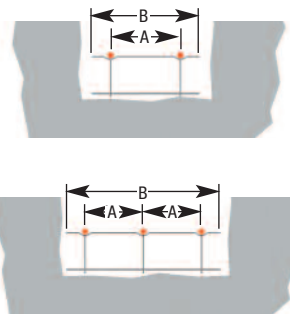
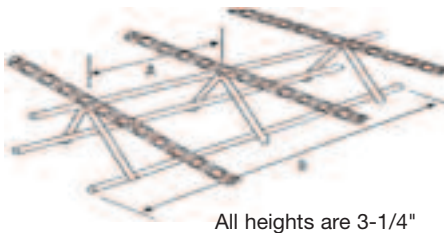


Size	Plain
3/4"	719095
1"	719169
1-1/4"	719266
1-1/2"	719363
1-3/4"	719468
2"	727001
2-1/2"	727006
2-3/4"	727016
3"	727021
3-1/4"	727026
3-1/2"	727031
3-3/4"	727036

Size	Plain
4"	727041
4-1/4"	727046
4-1/2"	727051
4-3/4"	727056
5"	727061
5-1/4"	727066
5-1/2"	727071
5-3/4"	727076
6"	727081
7"	727101
8"	727121

88

- (5060) FOUNDATION CHAIR - 12"
- (5062) FOUNDATION CHAIR - 16"
- (5065) FOUNDATION CHAIR - 20"



Type	Description	# of Bars	MB Item #	Diameter (A)	Diameter (B)	Footing Width	Weight Per 100 (lbs)
5060	2-12	2	570002	6"	8-1/2"	12"	12
5062	3-16	3	570003	5"	13-1/4"	16"	19
5065	3-20	3	570008	7"	17-1/2"	20"	26

### Reinforcing Bar Supports

**(5075) HIGH CHAIR (HC)**



Note<sup>1</sup>: Stainless Steel Class 2A priced upon availability (POA).

Description	MB Product #				Size	Approx. Weight
	Plastic Protected		Plain	Epoxy		
	Dipped	Tipped				
For heights up to 3"	770042	770045	770013	770107	2"	21
	770149	770152	770110	770204	2-1/4"	21
	770246	770249	770217	770301	2-1/2"	21
	770343	770346	770314	770408	2-3/4"	21
	770440	770443	770411	770505	3"	21
For heights over 3" and including 4"	770547	770550	770518	770602	3-1/4"	25
	770644	770647	770615	770709	3-1/2"	25
	770741	770744	770712	770806	3-3/4"	25
	770848	770851	770819	770903	4"	25
For heights over 4" and including 5"	770945	770948	770916	770932	4-1/4"	29
	770041	770044	770012	771106	4-1/2"	29
	771148	771151	771119	771203	4-3/4"	29
	771245	771248	771216	771300	5"	29
For heights over 5" and including 6"	771342	771345	771313	771407	5-1/4"	50
	771449	771452	771410	771504	5-1/2"	50
	771546	771549	771517	771601	5-3/4"	50
	771643	771646	771614	771708	6"	50
For heights over 6" and including 7"	771740	771743	771711	771805	6-1/4"	57
	771847	771850	771818	771902	6-1/2"	57
	771944	771947	771915	772008	6-3/4"	57
	772040	772043	772011	772105	7"	57
For heights over 7" and including 8"	772147	772150	772118	772202	7-1/4"	63
	772244	772247	772215	772309	7-1/2"	63
	772341	772344	772312	772406	7-3/4"	63
	772448	772451	772419	772503	8"	63

# General Line Products

## Reinforcing Bar Supports

### (5075) HIGH CHAIR (HC) -Continued



Note<sup>1</sup>: Stainless Steel Class 2A priced upon availability (POA).

Note<sup>2</sup>: Epoxy over 15" priced upon availability (POA).

Note<sup>3</sup>: Contact your Customer Service Representative for sizes exceeding 18" tall.

90

Description	MB Product #				Size	Approx. Weight
	Plastic Protected		Plain	Epoxy		
	Dipped	Tipped				
For heights over 8" and including 9"	772545	772548	772516	772600	8-1/4"	70
	772642	772645	772613	772700	8-1/2"	70
	772749	772752	772710	772807	8-3/4"	70
	772846	772849	772817	772865	9"	70
For heights over 9" and including 10"	*	772956	772914	772978	9-1/4"	102
	*	773052	773010	773095	9-1/2"	102
	*	773159	773117	773181	9-3/4"	102
	*	773256	773214	773270	10"	102
For heights over 10" and including 11"	*	773353	773311	773669	10-1/4"	102
	*	773450	773418	773495	10-1/2"	102
	*	773557	773515	773583	10-3/4"	102
	*	773654	773612	773675	11"	102
For heights over 11" and including 12"	*	773751	773719	773785	11-1/4"	116
	*	773858	773816	773895	11-1/2"	116
	*	773955	773913	773978	11-3/4"	116
	*	774051	774019	774095	12"	116
For heights over 12" and including 13"	*	774158	774116	774171	12-1/4"	119
	*	774255	774213	774278	12-1/2"	119
	*	774352	774310	774388	12-3/4"	119
	*	774459	774417	774472	13"	119
For heights over 13" and including 14"	*	774556	774514	774579	13-1/4"	172
	*	774653	774611	774626	13-1/2"	172
	*	774750	774718	774725	13-3/4"	172
	*	774857	774815	774861	14"	172

### Reinforcing Bar Supports

(5075) HIGH CHAIR (HC) -Continued



Note<sup>1</sup>: Stainless Steel Class 2A priced upon availability (POA).

Description	MB Product #				Size	Approx. Weight
	Plastic Protected		Plain	Epoxy		
	Dipped	Tipped				
For heights over 14" and including 15"	*	774954	774912	774971	14-1/4"	181
	*	775050	775018	775064	14-1/2"	181
	*	775157	775115	775161	14-3/4"	181
	*	775254	775212	775268	15"	181
For heights over 15" and including 16"	*	775351	775319	Note <sup>2</sup>	15-1/4"	189
	*	775458	775416	Note <sup>2</sup>	15-1/2"	189
	*	775555	775513	Note <sup>2</sup>	15-3/4"	189
	*	775652	775610	Note <sup>2</sup>	16"	189
For heights over 16" and including 17"	*	775759	775717	Note <sup>2</sup>	16-1/4"	198
	*	775856	775852	Note <sup>2</sup>	16-1/2"	198
	*	775953	775954	Note <sup>2</sup>	16-3/4"	198
	*	776059	776060	Note <sup>2</sup>	17"	198
For heights over 17" and including 18"	*	776156	776114	Note <sup>2</sup>	17-1/4"	207
	*	776253	776211	Note <sup>2</sup>	17-1/2"	207
	*	776350	776349	Note <sup>2</sup>	17-3/4"	207
	*	776457	776458	Note <sup>2</sup>	18"	207

91

# General Line Products

## Reinforcing Bar Supports

### (5080) HIGH CHAIR W/PLATE (HCP)



Note<sup>1</sup>: Bright/Plain material is standard. Stainless Steel Class 2A and Epoxy priced upon availability (POA).

Note<sup>2</sup>: Plate size for 2" to 5" is 4-1/2" x 4-1/2" (26 gauge), over 5" is 5" x 5" (26 gauge).

Note<sup>3</sup>: Specify when ordering "Strip Plate" or "Full Plate".

Size	MB Item #	Size	MB Item #	Size	MB Item #	Size	MB Item #
2"	770068	5"	771261	8"	772464	11"	773667
2-1/4"	770165	5-1/4"	771368	8-1/4"	772561	11-1/4"	773764
2-1/2"	770262	5-1/2"	771465	8-1/2"	772668	11-1/2"	773861
2-3/4"	770369	5-3/4"	771562	8-3/4"	772765	11-3/4"	773968
3"	770466	6"	771669	9"	772862	12"	774064
3-1/4"	770563	6-1/4"	771766	9-1/4"	772969	12-1/4"	774161
3-1/2"	770660	6-1/2"	771863	9-1/2"	773065	12-1/2"	774268
3-3/4"	770767	6-3/4"	771960	9-3/4"	773162	1-3/4"	774365
4"	770864	7"	772066	10"	773269	13"	774462
4-1/4"	770961	7-1/4"	772163	10-1/4"	773366	13-1/4"	774569
4-1/2"	771067	7-1/2"	772260	10-1/2"	773463	13-1/2"	774666
4-3/4"	771164	7-3/4"	772367	10-3/4"	773560	13-3/4"	774763

92

### (5085) HIGH CHAIR - SPECIAL



Note<sup>1</sup>: Contact your MB Service Center for this product.

Note<sup>2</sup>: Specify: Diagonal, 1 Horizontal Lace or 2 Horizontal Laces - P.O.A.

Note<sup>3</sup>: Set -Up Charge p/Order, regardless of order size or number of items.

Note<sup>4</sup>: Bright/Plain material is standard. Stainless Steel Class 2A and Epoxy priced upon availability (POA).

### (5090) HIGH CHAIR - FILL



Note<sup>1</sup>: Contact your MB Service Center for this product.

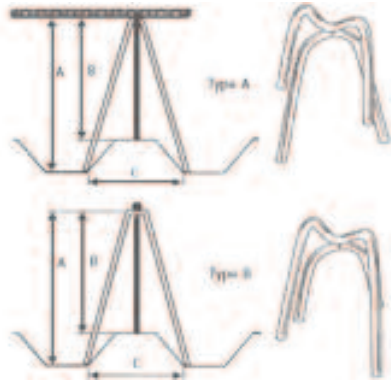
Note<sup>2</sup>: Specify: Diagonal, 1 Horizontal Lace or 2 Horizontal Laces - P.O.A.

Note<sup>3</sup>: Set -Up Charge p/Order, regardless of order size or number of items.

Note<sup>4</sup>: Bright/Plain material is standard. Stainless Steel Class 2A and Epoxy priced upon availability (POA).

### Reinforcing Bar Supports

#### (5100) HIGH CHAIR - METAL DECK



Used to support reinforcing bars on metal deck.  
Ends of legs are straight to prevent spreading on metal deck.  
Specify leg spacing and height. Available in Bright/Plain wire only.

For high chairs with the same "A" dimension, add to the Bright/Plain wire price.

Set-up charge per order, regardless of order size or number of items per order.

#### (5105) BAR CHAIR (BC)

Note<sup>1</sup>: Stainless Steel Class 2A priced upon availability (POA).



Description	MB Product #			Size	Approx. Weight
	Plastic Dipped	Plain	Epoxy		
For heights to and including 1"	760049	760010	760026	3/4"	100
	760146	760117	760127	1"	100
For heights over 1" and including 1-1/2"	760191	760162	760203	1-1/4"	100
	760243	760214	760271	1-1/2"	100
For heights over 1-1/2" and including 2"	760340	760311	760368	1-3/4"	107
	760447	760418	760465	2"	149

93

#### (5110) BAR CHAIR W/PLATE (BCP)

Note<sup>1</sup>: Bright/Plain material is standard. Stainless Steel Class 2A and Epoxy priced upon availability (POA).

Note<sup>2</sup>: Plate size is 3" x 4" (26 gauge).



Description	MB Product #		Size	Approx. Weight
	Plain	Epoxy		
For heights to and including 1"	760065	Note <sup>1</sup>	3/4"	100
	760560	Note <sup>1</sup>	1"	100
For heights over 1" and including 1-1/2"	760667	Note <sup>1</sup>	1-1/4"	100
	760269	Note <sup>1</sup>	1-1/2"	100
For heights over 1-1/2" and including 2"	760366	Note <sup>1</sup>	1-3/4"	107
	760463	Note <sup>1</sup>	2"	149

# General Line Products

## Reinforcing Bar Supports

### (5115) JOIST CHAIR (JC)



Note<sup>1</sup>: Stainless Steel Class 2A priced upon availability (POA).

Description	MB Product #			Size	Approx. Weight
	Plastic Dipped	Plain	Epoxy		
For heights of 3/4" x 4" x 6"	750020	750004	750035	3/4" x 4"	8
	750062	750046	750077	3/4" x 5"	8
	750101	750088	750103	3/4" x 6"	8
For heights of 1" x 4" x 6"	750143	750114	750158	1" x 4"	9
	750444	750415	750459	1" x 5"	9
	750745	750716	750759	1" x 6"	9
For heights of 1-1/4" x 4" x 6"	750295	750266	750297	1-1/4" x 4"	10
	750350	750318	750352	1-1/4" x 5"	10
	750770	750761	750404	1-1/4" x 6"	10
For heights of 1-1/2" x 4" x 6"	750240	750211	750255	1-1/2" x 4"	10
	750541	750512	750543	1-1/2" x 5"	10
	750842	750813	750857	1-1/2" x 6"	10
For heights of 1-3/4" x 4" x 6"	750596	750567	750598	1-3/4" x 4"	11
	750648	750619	750650	1-3/4" x 5"	11
	750693	750694	750695	1-3/4" x 6"	11
For heights of 2" x 4" x 6"	750696	750697	750698	2" x 4"	12
	750551	750550	750554	2" x 5"	12
	750553	750552	750555	2" x 6"	12

94

### (5120) JOIST CHAIR - 3 BAR



Note<sup>1</sup>: Stainless Steel Class 2A priced upon availability (POA).

Description	MB Product #			Size	Approx. Weight
	Plastic Dipped	Plain	Epoxy		
For heights of 1"	750861	750862	750864	1" x 6"	12
For heights of 1-1/2"	750863	750860	750865	1-1/2" x 6"	12

### Reinforcing Bar Supports

#### (5125) JOIST CHAIR - UPPER (UJC)



Note<sup>1</sup>: Stainless Steel Class 2A priced upon availability (POA).

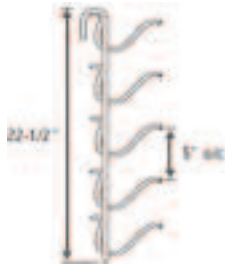
Note<sup>2</sup>: Other sizes priced upon availability (POA). They are also available with plastic capped legs.

Upper joist chairs are made to support the negative moment of steel in pan-joist end waffle-dome work. Supporting bar is made of .440" plain wire or #4 rebar.

Description	MB Product #			Size	Approx. Weight
	Plastic Dipped	Plain	Epoxy		
For heights of 1"	750796	750791	N/A	14"	100
For heights of 1-1/2"	750792	750793	N/A	14"	100
For heights of 2"	750794	750795	N/A	14"	100
For heights of 2-1/2"	750797	750799	N/A	14"	100

95

#### (5140) SIDE FORM SPACER (SFS)



Note<sup>1</sup>: Stainless Steel Class 2A priced upon availability (POA).

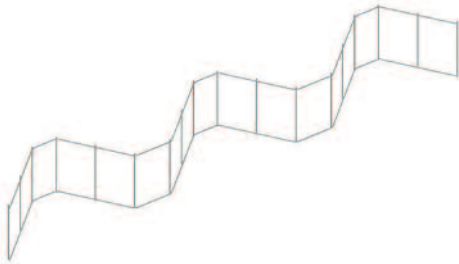
Note<sup>2</sup>: Available to fit any size rebar or length.

Description	MB Product #			Size	Approx. Weight
	Plastic Dipped	Plain	Epoxy		
For heights of 1"	750800	750801	750802	22-1/2"	10
For heights of 1-1/2"	750803	750804	750805	22-1/2"	10

# General Line Products

## Reinforcing Bar Supports

### (5150) ZIG-ZAG



Note<sup>1</sup>: All prices are F.O.B. Fort Worth, Texas with Freight allowed on orders of \$10,000 list and over.

Note<sup>2</sup>: All prices and weights are per 100 linear feet based on 8 linear feet per piece

Note<sup>3</sup>: Zig-Zag is available with epoxy coating. Contact your Customer Service Representative for a quote.

Note<sup>4</sup>: For estimating quantity requirements, multiply the square footage by 0.25.

Description	MB Item #	Size (Length)	Pieces Per Pallet	Linear Feet Per Pallet	Weight Per 100 (lbs)	Weight Per Pallet
For heights of 2"	860016	8'	1,500	12,000	17.3	2,076
For heights of 2-1/2"	860022	8'	1,500	12,000	18	2,160
For heights of 3"	860028	8'	1,200	9,600	18.5	1,776
For heights of 3-1/2"	860034	8'	1,000	8,000	19.3	1,544
For heights of 4"	860040	8'	1,000	8,000	19.6	1,568
For heights of 4-1/2"	860046	8'	900	7,200	20	1,440
For heights of 5"	860052	8'	800	6,400	21.2	1,357
For heights of 5-1/2"	860058	8'	700	5,600	21.9	1,227
For heights of 6"	860064	8'	560	4,480	31.6	1,416
For heights of 6-1/2"	860070	8'	560	4,480	32.6	1,461
For heights of 7"	860076	8'	480	3,840	33.5	1,287
For heights of 7-1/2"	860082	8'	400	3,200	44.2	1,415
For heights of 8"	860088	8'	400	3,200	45.2	1,447
For heights of 8-1/2"	860094	8'	400	3,200	46.1	1,476
For heights of 9"	860100	8'	400	3,200	47	1,504
For heights of 9-1/2"	860106	8'	320	2,560	48	1,229
For heights of 10"	860112	8'	320	2,560	48.9	1,252
For heights of 10-1/2"	860118	8'	320	2,560	49.8	1,275
For heights of 11"	860124	8'	320	2,560	50.7	1,298
For heights of 11-1/2"	860130	8'	240	1,920	51.6	991
For heights of 12"	860136	8'	240	1,920	52.5	1,008